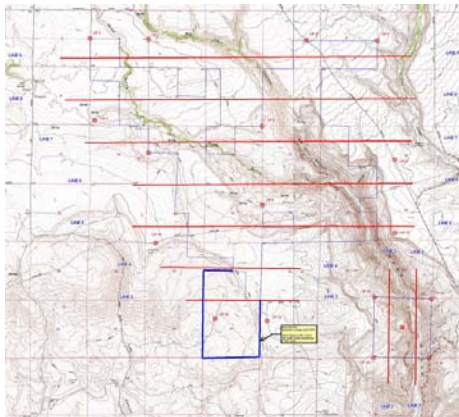




## Miller Ranch Wind Farm, Bickleton, WA; Northwest Wind Partners for enXco

White Shield managed the aerial mapping services and provided ground control for this proposed wind farm development covering 19 sections in the Wood Gulch/Big Horn Canyon area south of Bickleton, WA. White Shield surveyors set 18 aerial panels using static GPS, and mapping was developed at 2-foot contour intervals (1"=100') to support the ALTA survey and final engineering designs. A Record of Survey was provided showing the exterior project boundaries with a 100-foot buffer, and PLSS corner ties.



GPS Survey, Inc., and David C. Smith & Associates supplied the aerial flight and photogrammetric services to White Shield for this project. Color film was scanned on a Wehrli RM-6 roll feed photogrammetric scanner. The orthophoto imagery was rectified to an ASPRS Class 1 2-foot contour accuracy Digital Terrain Model (DTM), and the DTM was stereo digitized from the aerial photo flight. Orthophoto imagery was auto-mosaiced using KLT Atlas, and then manually reviewed and edited at all mosaic lines.

